

2020

社会责任报告

•

“ ” 2006 3 3

2019 4

CE
120 170

65 160EN

5000

90%

“ ”

“ ”

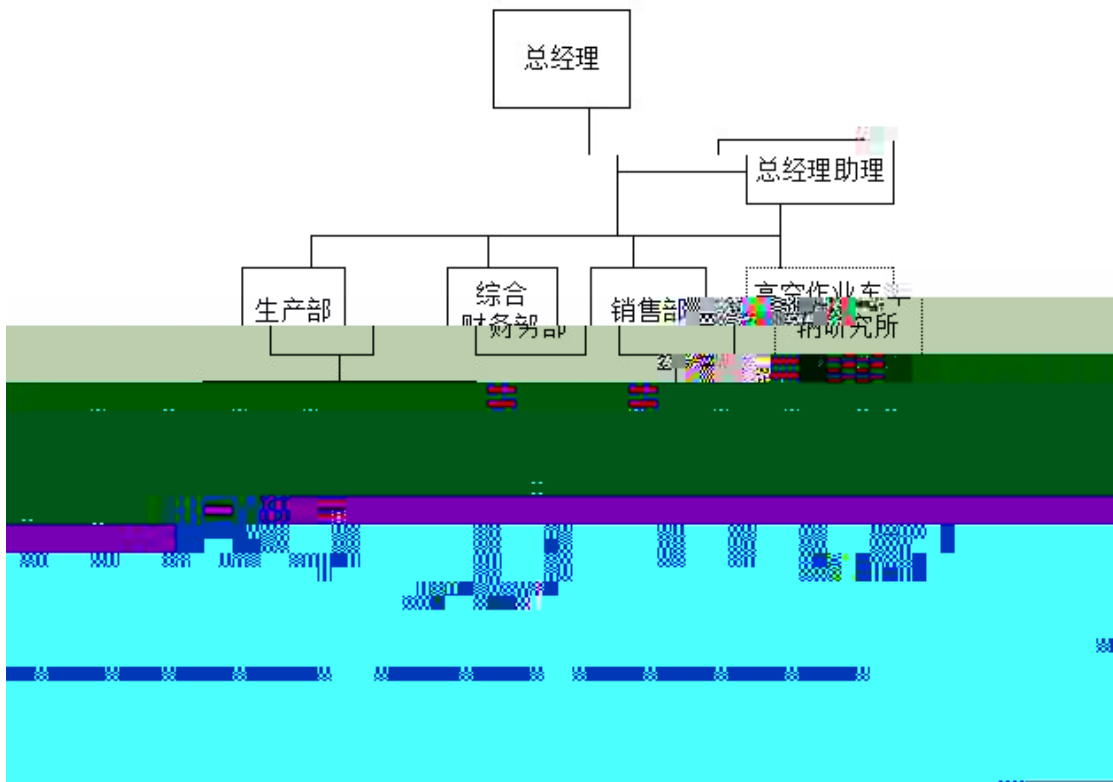
•

•

•

”

“
1



1

ISO5001

ISO9001 ISO4001

49

1

1



A

		7	14%			20	41%
	+ +	10	20%			11	22%
		19	39%			18	37%
		4				4	

•

2

2

•

“ ” “ ” “ ” “ ”

”

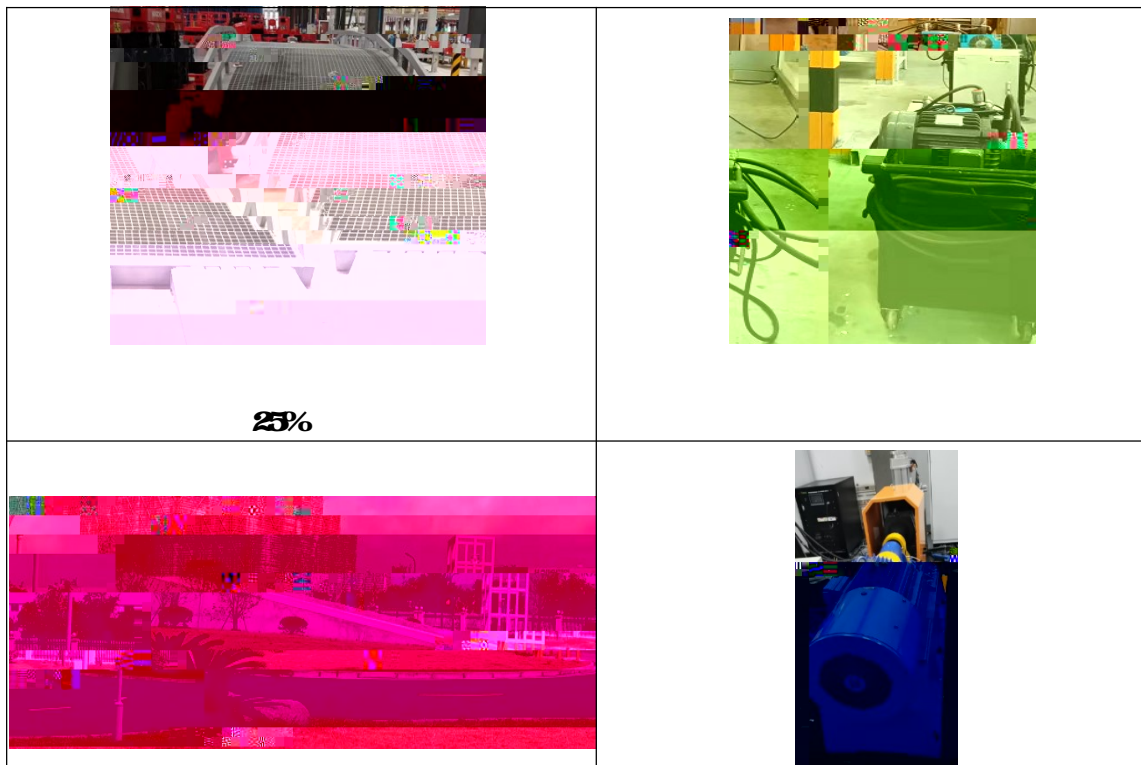
12 **11** **3%**

3

1	GK001	3	3T		A 2850
2	GK002	2 5	2 5T		A 3129

26	GQ008			CC	51089 7
27	GQ009			CC	51089 7
28	GQ010			CC	51089 7
29	GQ011			CC	51089 7
30	GQ012			CC	51089 9
31	GQ013			CC	51089 9
32	GQ002			CC	51089 8

25%



--	--

2

•

90%

80%

	3	3
	1 2 3	1 2 3 4
	1 2 3	1 2
	1 2 3	1 2 3

•

—

—

—

--

ISO9001

ISO14001

ISO5001

•

“

”

6

1



GB 8978 1996

4

GB 12348 2008

13

9

“

”

7

	/				
				,	



32

33

/

34



35

“ ” “ ”

36

“ ”



•

1

2

3

4

5

6